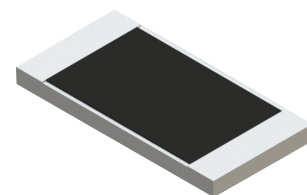


### RM1508DA-1200GN-95 Features:

- Single-Sided with Backplane Configuration
- Customer Defined Testing Available
- RoHS Compliant
- Waffle Pack Available (Standard is bulk)
- Glass Passivated Resistor Element
- 2% Resistor Tolerance



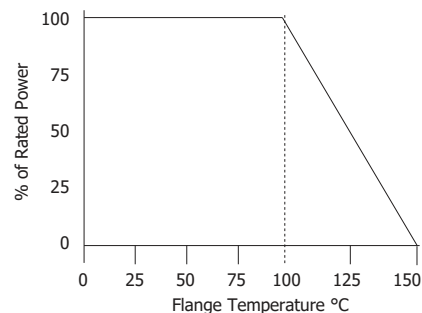
Actual Size

### RM1508DA-1200GN-95 Parameters:

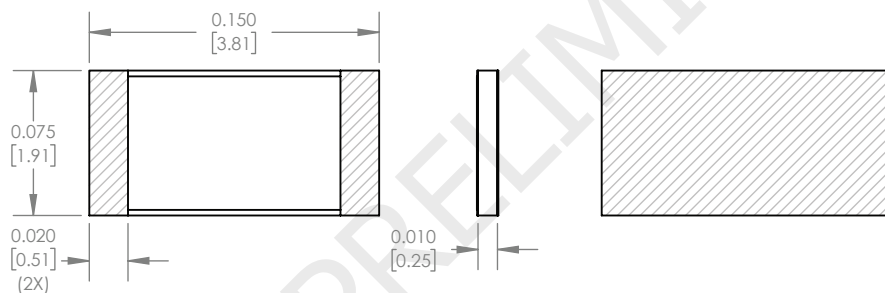
Nominal Resistance:	120Ω
CW Rated Power:	15W*
TCR:	±100PPM/ °C
Construction:	Thick Film on BeO
Terminal Metallization:	Thick Film Platinum Silver
Operating Temperature:	-55 to +150°C

\* Rating based on ≤100°C constant baseplate temperature  
 \*\* Test performed of a 50Ω device in a matched, continuous 50Ω system with proper workmanship

### RM1508DA-1200GN-95 Power Derating Curve



### RM1508DA-1200GN-95 Dimensions:



Dimensions in inches [mm]  
 Tolerance is ± 0.005 [0.127]  
 unless otherwise stated

### Ordering Information:

<b>RM</b>	<b>1508</b>	<b>DA</b>	<b>-</b>	<b>1200</b>	<b>G</b>	<b>N</b>	<b>-</b>	<b>95</b>	<b>UU</b>
Prefix for Single-Sided Resistor w/ Backplane				Value Code 1200 - 120Ω	Tolerance G - 2%	Normal Inspection Contact factory for additional options		Substrate 95 - 0.010" BeO	Packaging Blank - Bulk WP - Waffle Pack
Size 1508									
Terminal Metallization DA - Platinum Silver									
					RoHS <b>Yes</b>	Magnetic <b>No</b>	Solder <b>Yes</b>	Epoxy <b>Yes</b>	Wirebond <b>No</b>

Barry Industries reserves the right to change part number and/or process without notification.